



**We love that you are rocking JLab!  
We take pride in our products and fully stand behind them.**

JLAB®  
JBUDS WORK  
HEADSET



**YOUR WARRANTY**

All warranty claims are subject to JLab authorization and at our sole discretion. Retain your proof of purchase to ensure warranty coverage.



**CONTACT US**

Reach out to us at [support@jlab.com](mailto:support@jlab.com) or visit [jlab.com/contact](http://jlab.com/contact)

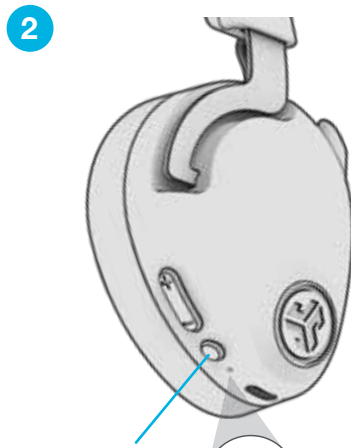
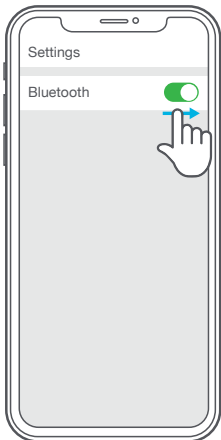
**REGISTER TODAY**

[jlab.com/register](http://jlab.com/register)

Product updates | How-to tips  
FAQs & more

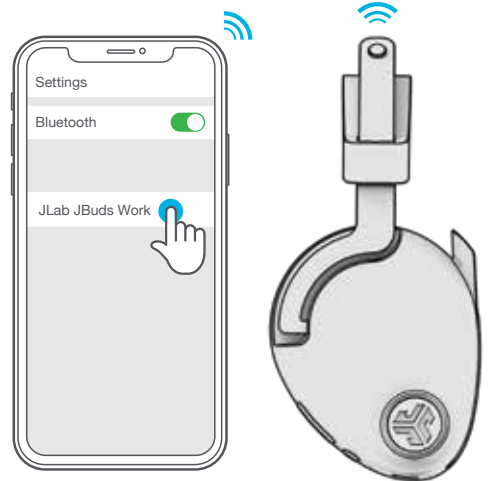
**BLUETOOTH PAIRING**

- 1 Turn on Bluetooth in your device settings.



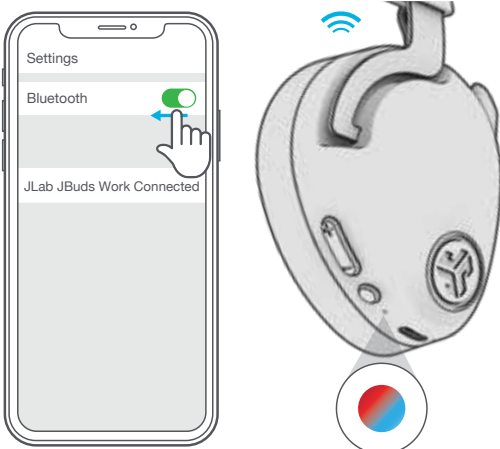
Press and hold button for **8 seconds**. Release. Lights will **flash blue/red**.

- 3 Select "JLab JBuds Work" in your device settings to connect.

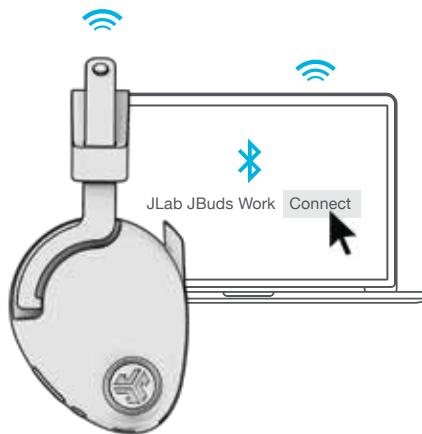


**MULTIPOINT (CONNECT 2 DEVICES SIMULTANEOUSLY)**

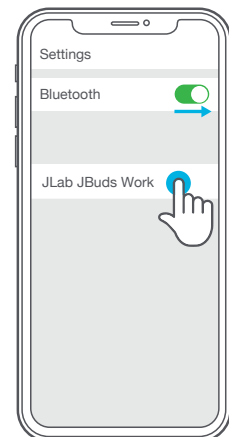
- 1 Once **FIRST** device is connected, turn off Bluetooth in device settings. JBuds Work will auto enter Bluetooth Pairing.



- 2 Enter your **SECOND** device Bluetooth settings and connect to JBuds Work.



- 3 Enter your **FIRST** device settings. Turn on Bluetooth and reconnect to JBuds Work.



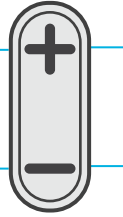
For more info and troubleshooting on MULTIPOINT visit: [JLAB.COM/MULTIPOINT](http://JLAB.COM/MULTIPOINT)

## BUTTON FUNCTIONS

**VOLUME UP:** Press once  
**TRACK FORWARD:** Press and hold 2+ seconds

**VOLUME DOWN:** Press once  
**TRACK BACKWARD:** Press and hold 2+ seconds

**POWER ON/OFF:** Press and hold 3+ seconds  
**PLAY/PAUSE:** Press once  
**ANSWER/HANG UP:** Press once  
(works when boom mic is in down position)  
**REJECT INCOMING CALL:** Press and hold 1+ second  
**ACTIVATE SIRI (iOS) OR "OK GOOGLE" (ANDROID):** Press twice  
**HEAR YOURSELF ON/OFF:** Triple press  
**BLUETOOTH PAIRING:** See *Bluetooth Pairing*.

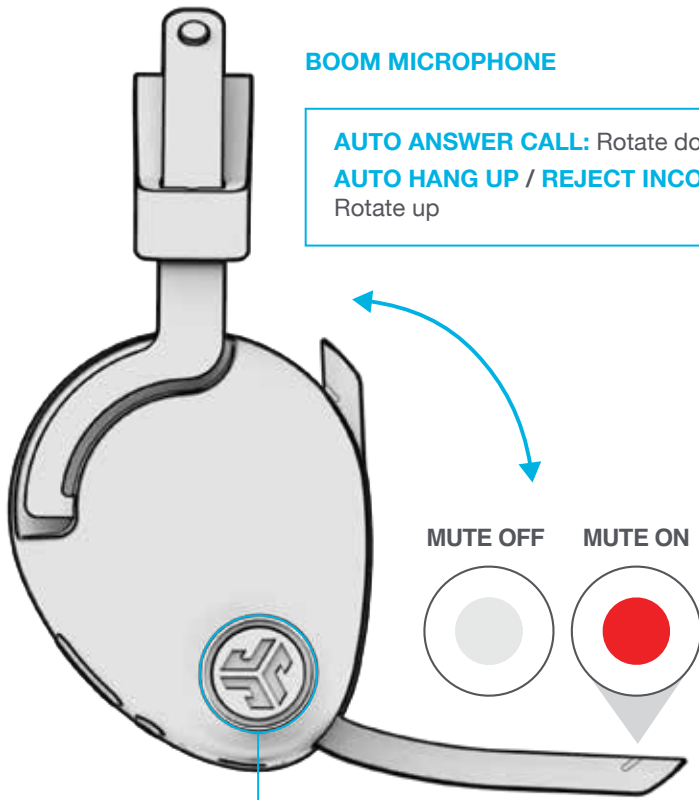


**SWITCH EQ VOICE / MUSIC:**  
Press and hold both buttons simultaneously

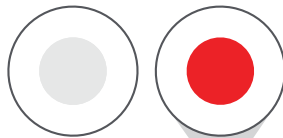


### BOOM MICROPHONE

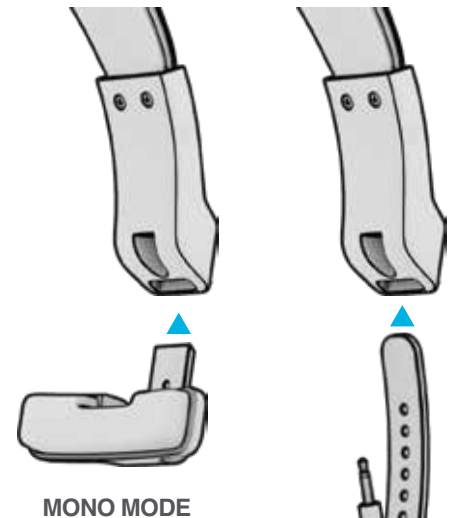
**AUTO ANSWER CALL:** Rotate down  
**AUTO HANG UP / REJECT INCOMING CALL:**  
Rotate up



MUTE OFF    MUTE ON



**MICROPHONE  
MUTE ON / OFF**



MONO MODE

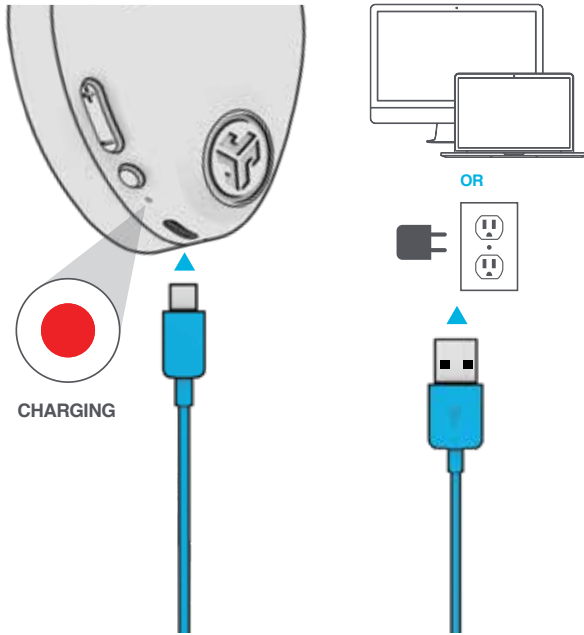


STEREO MODE

## CHARGING

Connect to computer or USB 5v 1A (or less) output device.

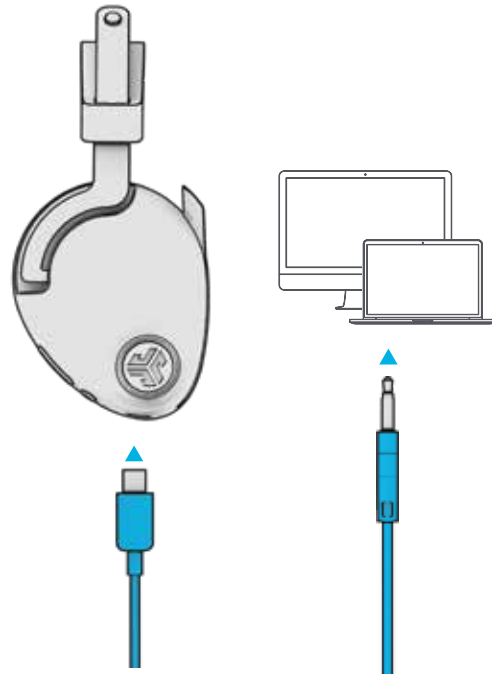
**Note:** JBuds Work can simultaneously charge while Bluetooth is connected.



## AUX INPUT

JBuds Work can be used as a wired headset with AUX cable.

**Note:** The headset will still use a limited amount of battery for the microphones to function.



## CAUTIONS

- Avoid getting moisture or liquids on the headphone cups.
- Avoid extreme heat, cold, and humidity.
- Avoid dropping or crushing headphones, stressing the cable by rapid pulling or extreme force, or bending the cable at a sharp angle.
- Wax may build up in headphone cups, lowering the sound quality. Carefully remove the wax with a cotton swab or other small tool to improve the sound quality.
- If you experience discomfort or pain, try lowering the volume or discontinuing use temporarily.
- If you experience regular discomfort while using this product, discontinue use and consult your physician.
- We recommend you treat your headphones as you would a nice pair of sunglasses and keep them in safe location when not in use.



[Shop products](#) | [Product alerts](#) | [Burn-in your headphones](#)

JLab Store + Burn-in Tool

