



JLAB®
|
JBUDS
MOUSE

We love that you are rocking JLab!
We take pride in our products and fully stand behind them.



YOUR WARRANTY

All warranty claims are subject to JLab authorization and at our sole discretion. Retain your proof of purchase to ensure warranty coverage.



CONTACT US

Reach out to us at support@jlab.com or visit jlab.com/contact

REGISTER TODAY

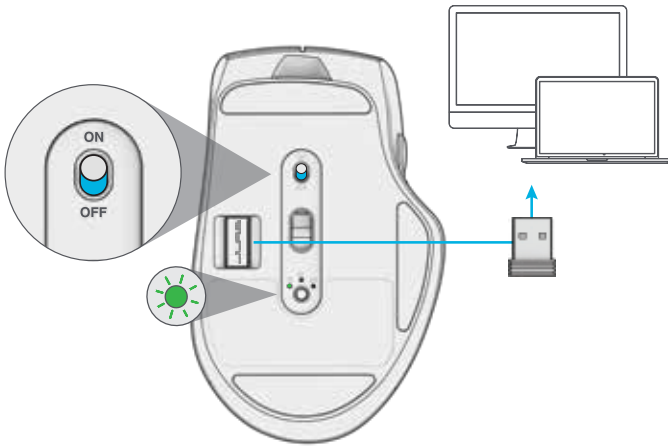
jlab.com/register

Product updates | How-to tips
FAQs & more

1 SETUP

2.4 Connect

Plug in the USB dongle to computer and turn on. The JBuds Mouse will auto connect to device.



2 Bluetooth Connect

Quick Press to toggle to **1** or **2**.

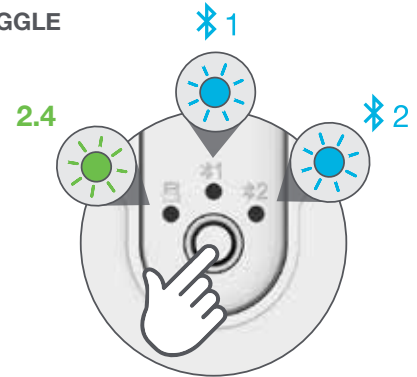
Then **Press and hold** to enter Pairing Mode (flashing light). Select "JLab JBuds Mouse" in device settings.

QUICK PRESS TO TOGGLE

PRESS AND HOLD TO PAIR

PAIRING MODE:
Flashing

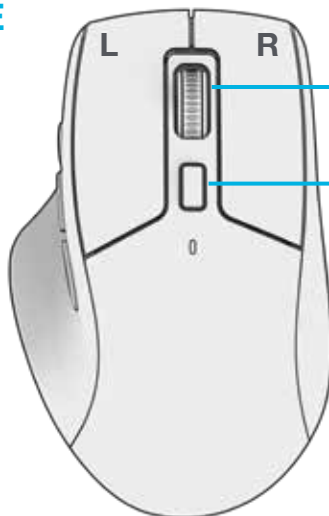
PAIRED:
Solid



Have a JLab Epic or JBuds Keyboard?

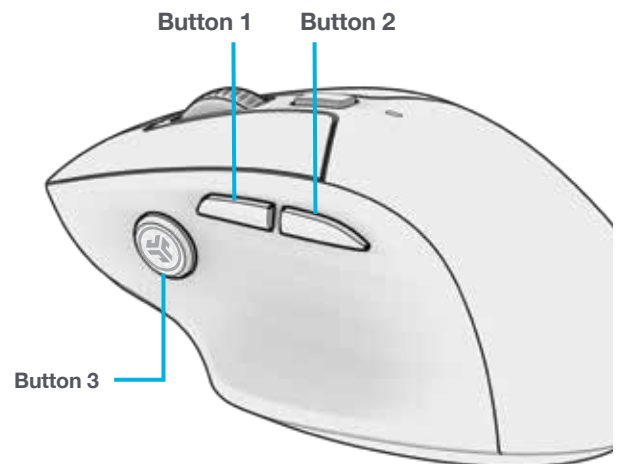
Scan the QR code to learn how to pair both your devices with just one dongle.

INTERFACE



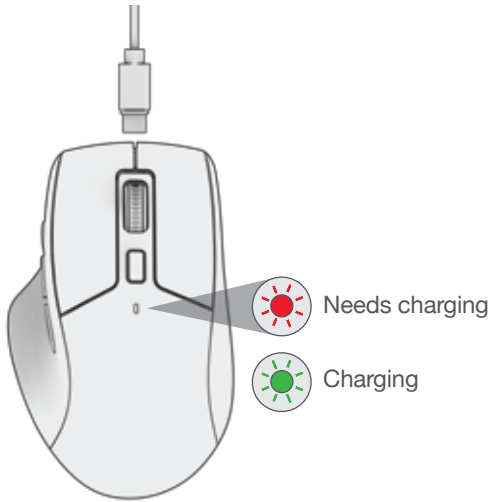
Scroll +
Middle Button

DPI Button:
Toggle mouse
sensitivity
(1200,1600,
2000,2400)



CHARGING

Connect the JBuds Mouse to computer or USB 5V 1A (or less) to charge.



CUSTOMIZATION

Download the JLab App (for Mac and PC) to fully customize the JBuds Mouse at: [JLAB.COM/SOFTWARE](https://www.jlab.com/software)



(2.4 dongle needs to be plugged in for customizing software)



[Shop products](#) | [Product alerts](#) | [Burn-in your headphones](#)

JLab Store + Burn-in Tool

